

Accessories

At FiberX, we have a wide range of Clip for FRP Walkway / FRP Grating in SS material of construction .

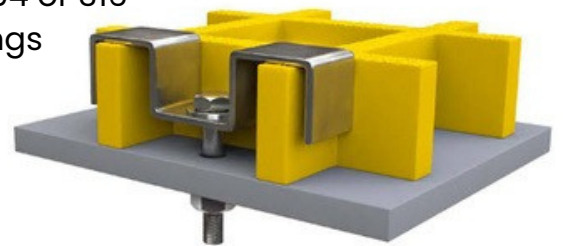
01

M Clamp



M clip also termed as Saddle clip, provides excellent hold-down capability by securing FRP gratings to the support using 2 adjacent bearing bars. We provide M Clips that suit FRP Moulded gratings.

- Material Grade: Stainless steel AISI 304 or 316
- Fits FRP Grating Type: Moulded gratings
- Fits Grating Mesh/C2C: 38 x 38 mm
- Fits Grating Height: 25mm
- Drilling: Not Required
- Includes: Self Drilling Screw / Rivet



02

C Clamp



C clips are panel joining clips that are specifically designed for holding two adjacent panels of Moulded fiberglass gratings together to minimize differential deflections

- Material Grade: Stainless steel AISI 304 or 316
- Fits FRP Grating Type: Moulded gratings
- Fits Grating Mesh/C2C: 38 x 38 mm
- Fits Grating Height: 25mm
- Drilling: Not Required
- Includes: M6/M8 Hex bolt of suitable length

